


POWER ON THE MOVE

UNIPOWER 3500

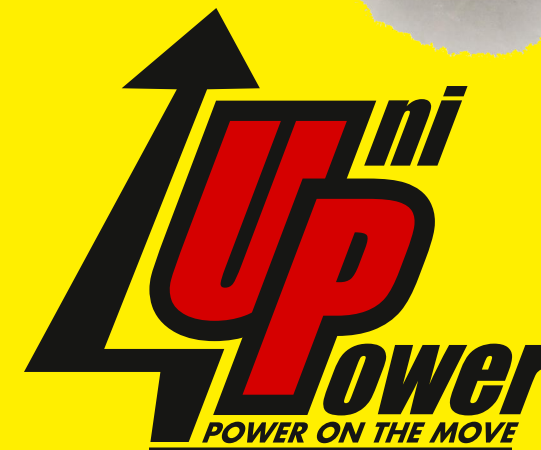
UNIPOWER 3500 ELECTRICAL SPECIFICATIONS			
	Generator Only		Generator-Battery Charger
	Defence Spec	Standard	BC
Duty Cycle	100%		
Max. Continuous 24V DC Battery Charging Output		N/A	85A @ 27.4V DC, fully automatic regulation
Max. Continuous 12V DC Battery Charging Output			85A @ 14.3V DC, fully automatic regulation
Optional fully regulated multiple charge selection			6-48V DC option
Battery charging characteristics	High frequency PWM regulated DC for superior charging performance and maximum battery life		
Max. Continuous Auxiliary Power Output @ 240/110V @ 50/60Hz	4.25kVA (4250W)	3.5kVA (3500W)	
Power Quality	Unity power factor. Sinewave technology with low T.H.D. characteristics		
Earth Leakage Protection	Complies with AS2790 and is not electrically bound to earth. No ELCB or RCD require to be fitted		
Control Supply Input or System Battery Voltage	10-38V DC		

UNIPOWER 3500 MECHANICAL SPECIFICATIONS	
Size	CONTROL HOUSING: 350mm(L) x 250mm(W) x 150mm (Deep) ALTERNATOR: 190mm(L) x 200mm(Cylindrical)
Weight	CONTROL HOUSING: 5.6kg ALTERNATOR: 5.4kg
Weight Packed	STANDARD KIT: 15.0kg
Construction	CONTROL HOUSING: Powder coated - primed zinc annealed steel enclosure sealed to IP65. Optional 316 stainless enclosure, sealed to IP68 also available ALTERNATOR: High pressure die cast aluminium housing sandwiches a class H (220 C) special stator. M8 brass terminals for high current DC. Anti-vibration fastenings standard. Split half pressed steel pulley to accommodate Z-B section V-belts. Optional multi-ribbed and cast steel split pulleys available.
Standard lead length (Alternator-Control Module)	3.5m long control loom complete with cable and bulkhead connectors (IP65 single lever action)
Alternator Operating Speeds	2,000-12,000rpm
Operating Temperature & Humidity Range	-20 C to 40 C 0-95% RH non-condensing
Optional auto load and engine speed control	Units can be configured to interface with the vehicle's engine management system (EFI control) in the exclusive vehicle stationary position (handbrake interlocked) whilst the unit is in operation. On sensing a load demand the unit will automatically signal the control to raise the engine rpm to a preset limit. Removal of the load signals the EFI control to return the engine rpm to idle. (Subject to additional hardware based on vehicle specific requirements)
In vehicle high capacity battery charging (12V or 24V)	Requires the installation of a high current solenoid between the Unipower alternator and the target battery. The following continuously rated solenoids manufactured by Echlin are strongly recommended for 12V systems fit Echlin ST85 and 24V systems fit Echlin ST88
Available Engine Configurations	Fitting can be accomplished onto any prime mover or power take off
Warranty	Comprehensive 12 months on a back to base basis. Parts and labour. Fitting and commissioning of the unit to be performed by a factory accredited installer

In line with our policy for continuous improvement, specifications are subject to change without notice. Copyright © 2011 Uni-Power International Pty Ltd

Regional Office for Southeast Asia, Middle East & Europe:
W. H. L. International (HK) Ltd
Unit A&B, Eton Building, 288 Des Voeux Road. Central. Hong Kong
Tel: + 618 9248 9900 Fax: + 603 5632 8296

Head Office:
Uni-Power International Pty Ltd
Tel: + 618 9248 9900 Fax: + 618 9248 9966
Unit 8, 69 Truganina Road, Malaga, WA. 6090 AUSTRALIA
Website: www.unipower.com.au Email inquiries: sales@unipower.com.au



UNIPOWER 3500

'POWER ON THE MOVE'
The complete mobile power supply-in a kit

The Only Mobile Powerhouse In A Kit

LIGHTING
Incandescent, Fluorescent, Metal Halide, Halogen, Mercury Vapour, High Pressure Sodium, And Much More

POWER TOOLS
Electronic Drills, Grinders, Sanders, Routers And Much More

ELECTRONIC APPLIANCES
TVs, VCRs, Computers, Microwaves And Much More

ELECTRICAL MACHINES
Dryers, Heaters, Air Compressors, Refrigerators, Electrical Boilers, Air Conditioners, And Much More

GENERATOR 3500
3500 WATTS Continuous AC Power

Optional BATTERY CHARGER
Regulated outputs 6-48 Vdc from the same unit

Heavy Duty Industrial Quality All Weather IP65 Powder Coated Zinc Annealed Steel Enclosure
316 Stainless Steel enclosure available as an option

Super Compact Heavy Duty Unipower Alternator
Automatic configuration for easy installation

Can Be Setup To Charge Existing Vehicle Battery 12V Or 24V
Fully automatic voltage selection and optimised pulse charging for automatic battery conditioning.
(requires option for battery charger)

12V BOOST CHARGING

24V BOOST CHARGING

Intelligent Microprocessor Controlled Technology for superior performance
SINE WAVE TECHNOLOGY

All the power you need wherever you go, 240V or 110V power supply from a 12V or 24V vehicle system..

Unipower is a special kit featuring a multi-purpose alternator and a power control unit. Fitted to any vehicle, boat, earth-moving equipment, stationary motor or 4W Drive it provides a safe, portable power source when you want it and where you want it.

IDEAL FOR :

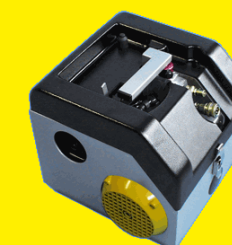
Farmers, tradesmen, military and emergency services, home handyman and anywhere you require power in remote areas.

KIT COMPRISES :

- Specially wound, multi-purpose alternator (can be used either in conjunction with, or as a replacement for existing alternator).
- Control module with remote hand throttle and cable. (Special alternator fitting kit available on application).
- Full installation and operating instructions for easy fit. Control units automatically configure for 12V or 24V vehicle systems.

FEATURES :

- Microprocessor controlled solid state circuitry.
- 3500 W of continuous AC power at 240 (110)V.
- Fully isolated 240V (110V) AC supply. Sine wave technology for low harmonic outputs.
- Standard kits with universal alternator configuration.
- Variable preset charging voltages to charge battery systems outside of the normal boost and float charge regimes.
- Designed to maximize engine cooling at low R.P.M. whilst the vehicle is stationary.
- Safe to use in vehicles with electronic instrumentation and control.
- Intelligent Power Manager protects control and power circuits from overloading.



• POWER TOOLS

Unipower produces a constant 240V or 110V power supply for all electric hand tools with an AC motor e.g. switchjack hammers, drills, chain saws, etc. Powers commercial grinders up to 235mm (9.5in) or 2,500 watt rating.

• LIGHTING

Unipower provides constant 240V or 110V power for all types of lighting. Unipower is the portable generator for lighting wherever you go.

• BATTERY CHARGER (BC model only)

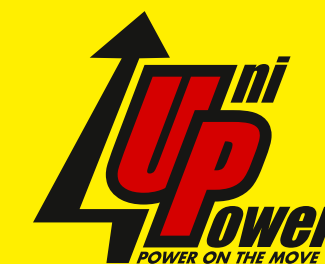
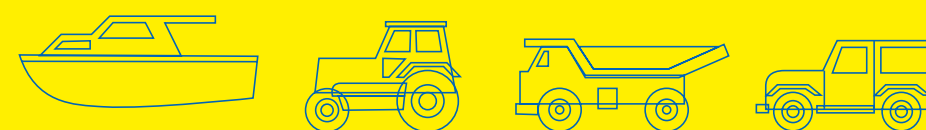
Unipower provides fully regulated battery charging for 12V, 24V Batteries.

• DRIVING

Unipower makes no difference to the way a vehicle is driven, and operates as a normal heavy duty alternator when driving with full regulation.

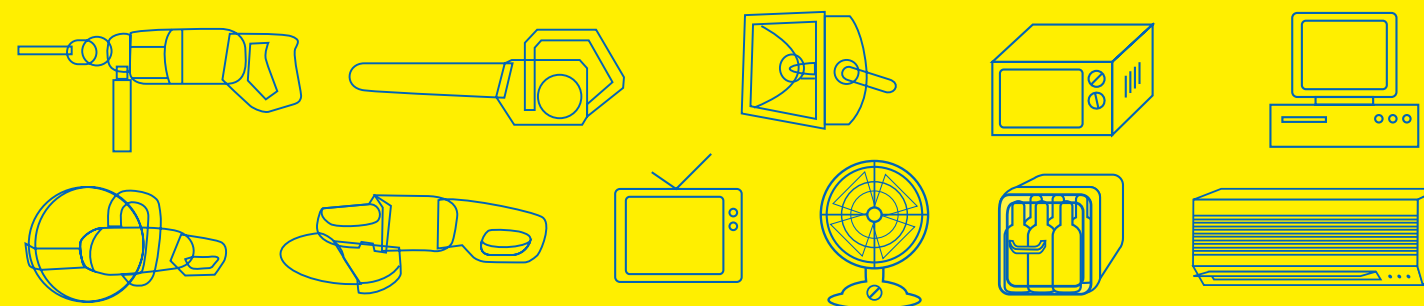
WHAT WILL IT FIT?

- Cars, boats, earth-moving equipment, tractors, fire trucks and 4W drive vehicles



WHAT CAN IT DO?

- Supplies AC power to run welders, grinders, drills, jack hammers, chain saws, lighting, rescue equipment and more



IMPORTANT

- 1) Uni-Power strongly recommend installation is conducted by a qualified or competent installer. If in doubt consult your Uni-Power dealer for approved installers.
- 2) Cannot damage your power tools through oversupply. Safe to use in vehicles with electronic equipment.